
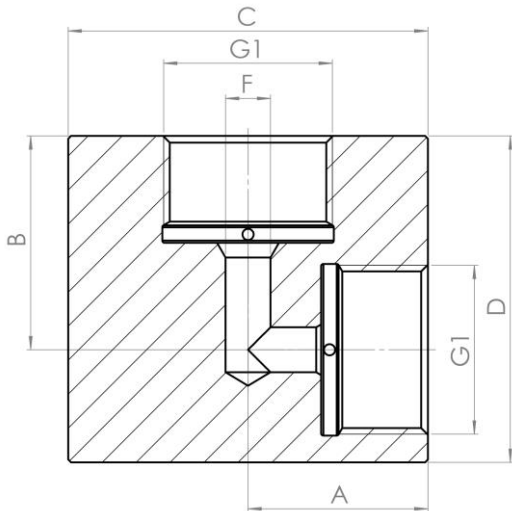


| | | |
|---|-------------------------|---------------|
|  | Datenblatt / Data Sheet | Seite 1 von 2 |
| | Hochdruck - Fitting | DB 2.511 |
| | High Pressure - Fitting | Revision 1.0 |
| Winkel / Elbow | | |



Winkel , M16 x 1,5 / 9/16"-18 UNF, HD-Rohr 6mm / 6,35mm (1/4")
 Elbow , M16 x 1,5 / 9/16"-18 UNF, HD-Tube 6mm / 6,35mm (1/4")


| Bezeichnung Typ | Abmessungen (mm) Dimensions (mm) | | | | | | | | Betriebsdruck Working Pressure (bar) |
|--------------------------|-------------------------------------|----|----|----|----|-----|---------------------------|----|--|
| | A | B | C | D | E* | F | G1 | G2 | |
| 211-02-042 231-02-042 | 18 | 25 | 36 | 36 | 22 | 2,2 | M16 x 1,5 9/16"-18 UNF | | 4200 |
| 211-02-070 231-02-070 | 18 | 25 | 36 | 36 | 22 | 2,2 | M16 x 1,5 9/16"-18 UNF | | 7000 |
| 211-02-100 231-02-100 | 18 | 25 | 36 | 36 | 22 | 1,6 | M16 x 1,5 9/16"-18 UNF | | 10000 |

E* = Körperdicke / Body thickness

Winkel , M20 x 1,5 / 3/4"-16 UNF, HD-Rohr 10mm / 9,52mm (3/8")
 Elbow , M20 x 1,5 / 3/4"-16 UNF, HD-Tube 10mm / 9,52mm (3/8")

| Bezeichnung Typ | Abmessungen (mm) Dimensions (mm) | | | | | | | | Betriebsdruck Working Pressure (bar) |
|--------------------------|-------------------------------------|----|----|----|----|-----|--------------------------|----|--|
| | A | B | C | D | E* | F | G1 | G2 | |
| 212-02-021 232-02-021 | 22 | 30 | 44 | 44 | 26 | 5,0 | M20 x 1,5 3/4"-16 UNF | | 2100 |
| 212-02-042 232-02-042 | 22 | 30 | 44 | 44 | 26 | 3,5 | M20 x 1,5 3/4"-16 UNF | | 4200 |
| 212-02-070 232-02-070 | 22 | 30 | 44 | 44 | 26 | 2,2 | M20 x 1,5 3/4"-16 UNF | | 7000 |
| 212-02-100 232-02-100 | 22 | 30 | 44 | 44 | 26 | 1,6 | M20 x 1,5 3/4"-16 UNF | | 10000 |

E* = Körperdicke / Body thickness

| | | |
|---|-------------------------|-----------------|
|  | Datenblatt/ Data Sheet | Seite 2 von 2 |
| | Hochdruck - Fitting | DB 2.511 |
| | High Pressure - Fitting | Revision 1.0 |
| Winkel / Elbow | | |

Winkel , M30 x 2,0 / 1-1/8"-12 UNF, HD-Rohr 14mm / 14,3mm (9/16")
 Elbow , M30 x 2,0 / 1-1/8"-12 UNF, HD-Tube 14mm / 14,3mm (9/16")

| Bezeichnung Typ | Abmessungen (mm) Dimensions (mm) | | | | | | | | Betriebsdruck Working Pressure (bar) |
|--------------------------|-------------------------------------|----|----|----|----|-----|----------------------------|----|--|
| | A | B | C | D | E* | F | G1 | G2 | |
| 213-02-021 233-02-021 | 32 | 38 | 64 | 58 | 36 | 8,0 | M30 x 2,0 1-1/8"-12 UNF | | 2100 |
| 213-02-042 233-02-042 | 32 | 38 | 64 | 58 | 36 | 5,0 | M30 x 2,0 1-1/8"-12 UNF | | 4200 |

E* = Körperdicke / Body thickness